



food



transport



hire



public sectors



consumer



industry



## S 6800 BT LIFT / S 6800 SC LIFT

- Shock-proof steel frame.
- Perfectly balanced weight of the components, thus resulting in totally safe quick changes of direction.
- Wide collection compartment.
- Large filtering surface distributed on 5 cartridge filters fitted with electronic filter-shaker.
- Easy-to-use machine drives.
- Easy and quick routine maintenance.
- On request, additional side brush / dust-laying front system.

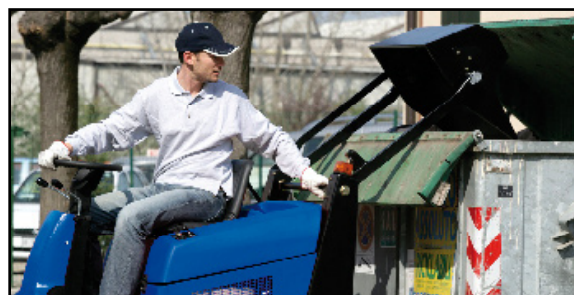
### S 6800 SC Lift

- gasoline engine Honda 5,5 HP/4 kW
- limiting gradient 15%
- hydraulic front drive
- max.working speed 5.5 Km/h
- hourly efficiency : 6875 m<sup>2</sup>/h
- working width: 950 mm (max 1250 mm)



### S 6800 BT Lift

- electric motor 24V/1350W
- limiting gradient 10%
- electric rear drive
- max.working speed 5.5 Km/h
- hourly efficiency: 6875 m<sup>2</sup>/h
- working width: 950 mm (max 1250 mm)



	S 6800 BT LIFT	S 6800 SC LIFT
Code	6152	6153
main brush width	700mm/ 27,56inc	700mm/ 27,56inc
main brush + 1 side brush	950mm / 37,40inc	950mm / 37,40inc
main brush + 2 side brushes	1250mm/ 49,21inc	1250mm/ 49,21inc
collector tank	95lt - 25,10gal	95lt - 25,10gal
refuse container lifting height	130 cm / 52 inc	130 cm / 52 inc
max working capacity	6875 m <sup>2</sup> /h - 74001 ft <sup>2</sup>	6875 m <sup>2</sup> /h - 74001 ft <sup>2</sup>
traction/ limiting gradient	rear wheels / 10%	front wheel / 15%
max speed	5,5 km/ h- 3,42 mile/h	5,5 km/ h- 3,42 mile/h
motor type / power	24V / 1350W	Honda 5,5 HP / 4kW
filtering surface/ filter shaker	5 m <sup>2</sup> / 54ftp2/ electric	5 m <sup>2</sup> / 54ftp2/ electric
dimension / weight	136x96x118 cm/ 312kg	136x96x118 cm/ 340kg